



Borderline Tunes

19 July 2022

INDEX

Page	Tune	Dance
3	Amoco Stomp	Tinners
4	British Grenadiers	Skirmish
5	Click Go The Shears	Tinners
6	Cukoo's Nest	Cuckoo
7	Davy Davy Knick Knack	Knickers
8	Fairy Dance	The Sorting Hat
9	Horses' Brawl	Horses' Brawl
10	Jan Mijne Man	Starburst
11	Jump At The Sun	Worcester Hey
12	Lollipop Man	Lollipop Man
13	Much Wenlock	Much Wenlock
14	Portobello Hornpipe	Ragged Crow
15	Pride Of Petravore	Gregory's Powder
16	Round the Wrekin	Round the Wrekin
17	Schottische à Virmoux	Trigonometry
18	Shave The Donkey	Frantic Alice
19	Star of the County Down	Star of the County Down
20	Swaggering Boney	Fullabrook
21	Thème Vannetaise	Twiglet
22	Upton-upon-Severn Stick Dance	Upton-upon-Severn Stick Dance
23	Weasel's Revenge	Worcester Monkey

Song

	Song	Tune
24	Borderline Apple Blossom Song	Rattlin' Bog
25	Borderline Apple Blossom Song Words	

Processional

26	Oy! Tune
----	----------



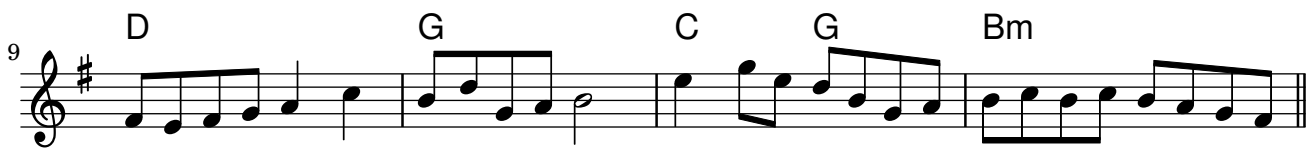
Amoco Stomp
 Pete Whittet
 Arranged by Borderline

Dance: Tinnners

A



B





Click Go The Shears

Traditional

Dance: Tinnors
(With Audience Participation)

A

Musical notation for section A, measures 1-8. The key signature is one sharp (F#) and the time signature is 2/4. The melody consists of eighth and quarter notes. Chords G, C, G, D, C, D, G are indicated above the staff.

B

Musical notation for section B, measures 17-24. The key signature is one sharp (F#) and the time signature is 2/4. The melody consists of eighth and quarter notes. Chords D, G, C, G, D, G are indicated above the staff.

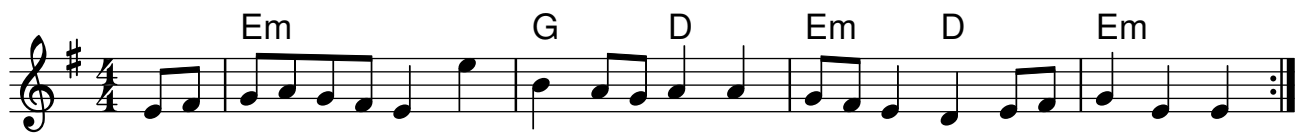


Cuckoo's Nest

Traditional

Dance: Cuckoo
Traditional

A



B





Davy Davy Knick Knack

Traditional

Adapted and arranged by Borderline

Dance: Knickers

Borderline

A

Musical notation for section A, measures 1-8. The music is in G major (one sharp) and 4/4 time. It consists of two staves. The first staff contains measures 1-4, and the second staff contains measures 5-8. Chords G and D are indicated above the notes.

B

Musical notation for section B, measures 9-17. The music is in G major (one sharp) and 4/4 time. It consists of three staves. The first staff contains measures 9-12, the second staff contains measures 13-16, and the third staff contains measure 17. Chords G and D are indicated above the notes.

An extra two bars are added to the normal **(B)** music to accommodate the Dance



Fairy Dance

Traditional

Arranged by by Borderline

Dance: The Sorting Hat

Originally 'Reality Checkpoint'

by Gog Magog Molly

A



B





Horses Brawl

Traditional

Dance: Horses Brawl
Traditional

A

Musical notation for section A, measures 1-8. The key signature is one sharp (F#) and the time signature is 4/4. The melody is written on a treble clef staff. Chords are indicated above the notes: G, D, G, C, D. Measure numbers 5 and 8 are marked at the beginning and end of the section respectively.

B

Musical notation for section B, measures 9-16. The key signature is one sharp (F#) and the time signature is 4/4. The melody is written on a treble clef staff. Chords are indicated above the notes: G, D, D, G, D, D. Measure numbers 9 and 13 are marked at the beginning and middle of the section respectively.

C

Musical notation for section C, measures 17-24. The key signature is one sharp (F#) and the time signature is 4/4. The melody is written on a treble clef staff. Chords are indicated above the notes: Em, D, D, D, Em, D, G, D, G. Measure numbers 17 and 21 are marked at the beginning and middle of the section respectively.



Jan Mijne Man
The Witchmen

Dance: Starburst
Borderline

A



B





Jump At The Sun

John Kirkpatrick

adapted and arranged by Borderline

Dance: Worcester Hey

A

Musical notation for section A, measures 1-8. The key signature is one sharp (F#) and the time signature is 6/8. The melody is written on a treble clef staff. Chord symbols are placed above the staff: Em (measures 1-4), Em Bm (measures 5-6), Em C Bm Em (measures 7-8).

B

Musical notation for section B, measures 9-16. The key signature is one sharp (F#) and the time signature is 6/8. The melody is written on a treble clef staff. Chord symbols are placed above the staff: Em Bm Em Bm Em (measures 9-12), Em C Bm Em (measures 13-16).



Lollipop Man

Traditional

Dance: Lollipop Man

A

Musical notation for section A, measures 1-8. The key signature is one sharp (F#) and the time signature is 4/4. The melody is written on a treble clef staff. Chords G, C, and Em are indicated above the staff.

5

B

Musical notation for section B, measures 9-16. The key signature is one sharp (F#) and the time signature is 4/4. The melody is written on a treble clef staff. Chords G, D, C, and Em are indicated above the staff.

9

13



Much Wenlock

Traditional

Dance: Much Wenlock

A

Musical notation for section A, measures 1-8. The key signature is one sharp (F#) and the time signature is 4/4. The melody is written on a treble clef staff. Chords G, D, C, and G are indicated above the notes.

5

Musical notation for section A, measures 5-8. The melody continues on a treble clef staff. Chords G, D, C, D, and G are indicated above the notes.

B

9

Musical notation for section B, measures 9-12. The melody is written on a treble clef staff. Chords G, C, D, G, and D are indicated above the notes.

13

Musical notation for section B, measures 13-16. The melody is written on a treble clef staff. Chords G, D, C, D, and G are indicated above the notes.



Portobello Hornpipe

Traditional

Dance: Ragged Crow
Long Barrow Morris

A

Musical notation for section A, measures 1-8. The key signature is one sharp (F#), and the time signature is 4/4. The melody begins with a triplet of eighth notes (G, A, B) followed by quarter notes. Chords G, D, G, C, G, D, G are indicated above the staff.

B

Musical notation for section B, measures 9-16. The key signature is one sharp (F#), and the time signature is 4/4. The melody continues with eighth and quarter notes. Chords G, C, D, G, G, D, G are indicated above the staff. Measure 13 is marked with a '13' at the beginning.



Pride of Petravore
Traditional

Dance: Gregory's Powder
Rhubarb Tarts

A

Musical notation for section A, measures 1-5. The key signature is one sharp (F#) and the time signature is common time (C). The melody is written on a treble clef staff. Chords are indicated above the staff: Em (measures 1-2), D (measures 3-4), and Em (measures 5-6). A first ending bracket covers measures 5-6, with a second ending bracket covering measure 6.

B

Musical notation for section B, measures 10-14. The key signature is one sharp (F#) and the time signature is common time (C). The melody is written on a treble clef staff. Chords are indicated above the staff: C (measures 10-11), G (measures 12-13), Bm (measures 14-15), and Em (measures 16-17). A first ending bracket covers measures 16-17, with a second ending bracket covering measure 17.



Round the Wrekin

Dance: Round the Wrekin
Hunter's Moon Morris

A

Musical notation for section A, measures 1-8. The key signature is one sharp (F#) and the time signature is 4/4. The melody is written on a treble clef staff. Chord symbols are placed above the notes: Em, D, Em.

5

Musical notation for section A, measures 5-8. The key signature is one sharp (F#) and the time signature is 4/4. The melody is written on a treble clef staff. Chord symbols are placed above the notes: Em, D, Em.

B

Musical notation for section B, measures 9-12. The key signature is one sharp (F#) and the time signature is 4/4. The melody is written on a treble clef staff. Chord symbols are placed above the notes: Em, D, Em, D.

9

Musical notation for section B, measures 13-16. The key signature is one sharp (F#) and the time signature is 4/4. The melody is written on a treble clef staff. Chord symbols are placed above the notes: Em, D, C, Bm, Em, D, Em.

13



Schottische à Virmoux

Fredrick Paris

Adapted by Borderline

Dance: Trigonometry
adapted from Boggart's Breakfast

A

Musical notation for section A, measures 1-8. The key signature is one sharp (F#) and the time signature is 4/4. The notation includes treble clef, a key signature of one sharp, and a 4/4 time signature. The melody is written on a single staff. Chords are indicated above the notes: G, C, G, C, D, G, C, G, G.

B

Musical notation for section B, measures 9-16. The key signature is one sharp (F#) and the time signature is 4/4. The notation includes treble clef, a key signature of one sharp, and a 4/4 time signature. The melody is written on a single staff. Chords are indicated above the notes: G, C, G, D, G, C, G, D, G.



Shave the Donkey

Traditional

Dance: Frantic Alice
Borderline

A



B





Star of the County Down

Traditional

Dance: Star of the County Down

Mythago

A

Em G D G Em D

Em G D G Em D Em

B

G D G Em D

Em G D G Em D Em

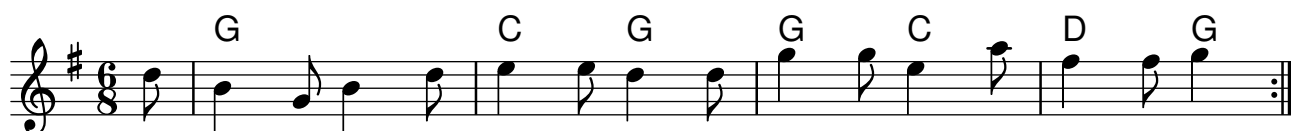


Swaggering Boney

Traditional arr: Borderline

Dance: Fullabrook
Borderline

A



B





Thème Vannetaise

Tri Yann

Dance: Twiglet
Planet Morris

A

Musical notation for section A, measures 1-8. The key signature is one sharp (F#) and the time signature is 4/4. The melody is written on a single treble clef staff. Chord symbols are placed above the staff: Em (measures 1-2), D (measures 3-4), C (measures 5-6), D (measures 7-8), and Em (measures 9-10).

B

Musical notation for section B, measures 9-16. The key signature is one sharp (F#) and the time signature is 4/4. The melody is written on a single treble clef staff. Chord symbols are placed above the staff: Em (measures 9-10), D (measures 11-12), C (measures 13-14), D (measures 15-16), and Em (measures 17-18).

Tri Yann is a Breton Band
The tune was used as the theme for a French TV series 'Picou, Fils de Son Père'



**Upton-upon-Severn
Stick Dance**
Traditional

**Dance: Upton-upon-Severn
Stick Dance**

A

Musical notation for section A, measures 1-5. The key signature is one sharp (F#) and the time signature is 6/8. The notes and chords are as follows:

Measure	Notes	Chord
1	G4, A4, B4	G
2	C5, B4, A4, G4	D
3	F#4, E4, D4, C4	G
4	B3, A3, G3, F#3	G
5	E4, D4, C4, B3	D

B

Musical notation for section B, measures 6-13. The key signature is one sharp (F#) and the time signature is 6/8. The notes and chords are as follows:

Measure	Notes	Chord
6	G4, A4, B4	G
7	C5, B4, A4, G4	C
8	F#4, E4, D4, C4	G
9	B3, A3, G3, F#3	G
10	E4, D4, C4, B3	C
11	G4, A4, B4	D
12	C5, B4, A4, G4	G
13	F#4, E4, D4, C4	G



Weasel's Revenge

Jan Hurst

Dance: Worcester Monkey
Wicket Brood

A

Musical notation for section A, measures 1-8. The key signature is one sharp (F#) and the time signature is 4/4. The melody is written on a treble clef staff. Chords are indicated above the staff: Em (measures 1-4), C (measure 5), D (measures 6-7), and a first ending with Em (measure 8) and a second ending with A (measure 8).

B

Musical notation for section B, measures 9-16. The key signature is one sharp (F#) and the time signature is 4/4. The melody is written on a treble clef staff. Chords are indicated above the staff: Em (measures 9-10), D (measures 11-12), C (measures 13-14), and D (measures 15-16). The section concludes with a first ending with Em (measure 16) and a second ending with a whole note (measure 16).



Borderline Apple Blossom Song

Doug Joslin

Tune: Rattlin' Bog

Traditional

Verse

G C G G D

Hail Hail the May O, Keep the fro-sts a-- way O.
 We Hail the May O, The Bloss-oms to-- pro- lif- er- ate.
 So we dance, Jack Frost to fight. Green Man's w- e- l- come, green and bright.

5 G C G G D G

The Green Man from his slum- bers shed, to send Jack Frost back to his bed.
 Jack Fr- ost he dare not strike, What the Bees do poll- in- ate.
 Oh, Apple Tree, we Wass- ail thee, and App- les plen- ty, we shall see.

Chorus

9 G D G D G G D

Frosts in May GO A- WAY! Save our ap- ples here to- day.

13 G D G D G G D G G G D G

Frosts in May GO A- WAY! Green Man help us here to- day.



Borderline Apple Blossom Song

by Doug Joslin

Verse 1

Hail Hail the May O,
 Keep the frosts away O.
 The Green Man from his slumbers shed,
 to send Jack Frost back to his bed.

Chorus

Frosts in May, **Go Away!!**
 Save our apples here today.
 Frosts in May, **Go Away!!**
 Green Man help us here today.

Verse 2

We Hail the May O,
 The Blossoms to proliferate.
 Jack Frost dare not strike,
 What the Bees do pollinate.

Chorus

Verse 3

So we dance, Jack Frost to fight.
 Green Man's welcome, green and bright.
 Oh, Apple Tree, we Wassail thee,
 and Apples plenty, we shall see.

Chorus



Oy! Tune
Mortimer's Morris

PROCESSIONAL

A



B



